

## VARIATIONS TEST - JAN 25, 2024

Exploring the Impact of Checkpoint Iterations in Model Training

# A1111

**LoRAs Used:** detail\_slider\_v4, pear\_v1, and l1n3s

**Wildcards Used:** \_adj-beauty\_ & \_breastsize\_

Checkpoints scrutinized include the ones listed below. The primary focus was on evaluating the impact of freezing pre-trained model weights and introducing trainable layers. It's important to acknowledge that stable diffusion iterations may display variations, yet the approximations maintain consistency. The experimentation delved into nuances of architecture adjustments and weight variations to extract insights into optimizing model performance.

### ITERATION

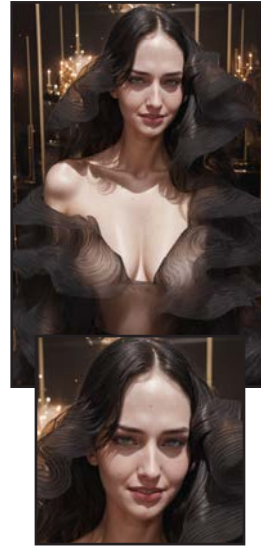
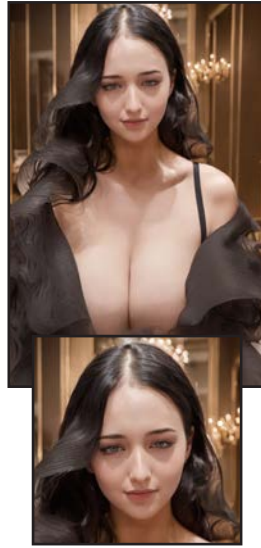
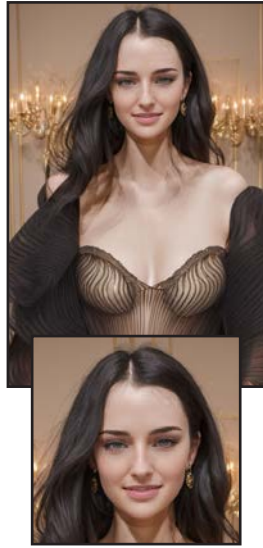
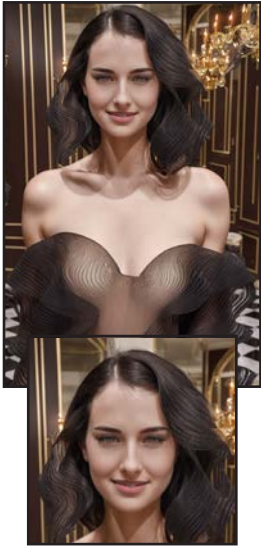
PERSONAL USE: LEMON

PERSONAL USE: PEAR\_BETA

CHILLOUTMIX\_NIPRUNEDFP16FIX

PHOTON\_V1

DELIBERATE\_V3



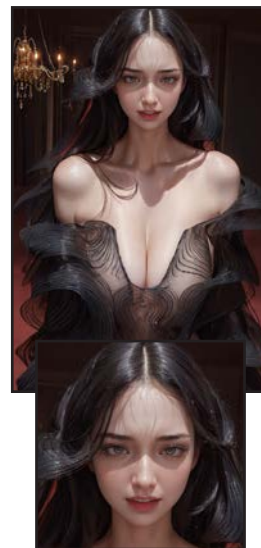
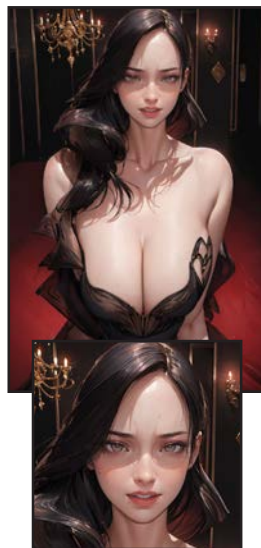
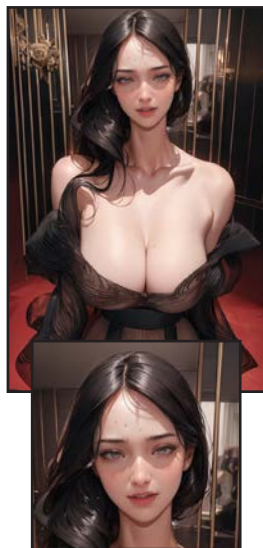
VIXONSFANTASYMIX\_V20

ASTRANIME\_V5B

ASTRANIMEMIX\_V1

XXMIX9REALISTIC\_V40VV

MEICHIDARKMIX\_MEICHIDARKV5



**PROMPT:** (((round face))), age 25, young woman, black hair, long voluminous hair, makeup, (((full lips))), (pouty lips), perfect eyes, smile, detailed skin texture, (blush:0.5), (goosebumps:0.5), subsurface scattering, masterpiece, award-winning, professional, highly detailed, caucasian, twenty years of age, girl snub-nosed, American Girl, ((micro headshot)), (in frame), \_adj-beauty\_, 1girl, \_breastsize\_ ((bokeh:0.4)), gold decorated frames, ermine fur, at a mansion, ethereal expanse of dreams, wide aperture, classic noir cinematography, (survival horror genre, checkered floor, dark red and black room, dark theme, (dark vibes:1.1)), luxurious elements, marble, high society, realistic human hands, <lora:detail\_slider\_v4:1>, <lora:Pear\_v1:0.8>, <lora:l1n3s:0.8>, l1n3s, see-through, sheer dress

**NEGATIVE PROMPT:** (low quality, worst quality:1.3), negative\_hand-neg, bad-picture-chill-75v, , deformed, male, 1boy, BadDream, bad-hands-5, badhandv4, By bad artist-neg, easynegative, FastNegativeV2, CyberRealistic\_Negative-neg

**STEPS:** 28, Sampler: DPM++ SDE Karras, CFG scale: 7, sSize: 512x768