

Unidata - iBeta Level 1

Certification iBeta - key aspects

What is iBeta?

iBeta is a top testing lab for biometric systems. Their liveness check certificate means your system is great at telling real people from fake ones, making it super secure

Which companies are usually interested in that?

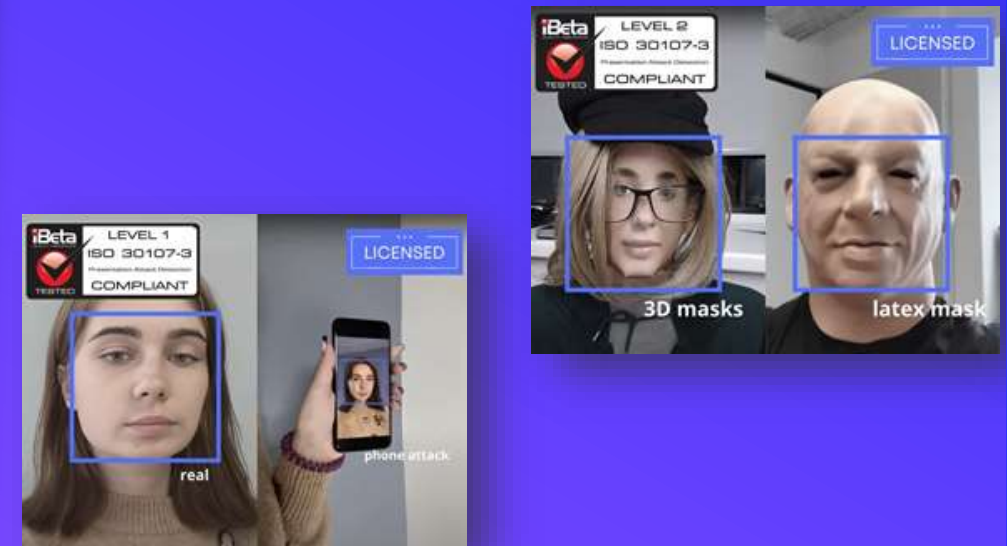
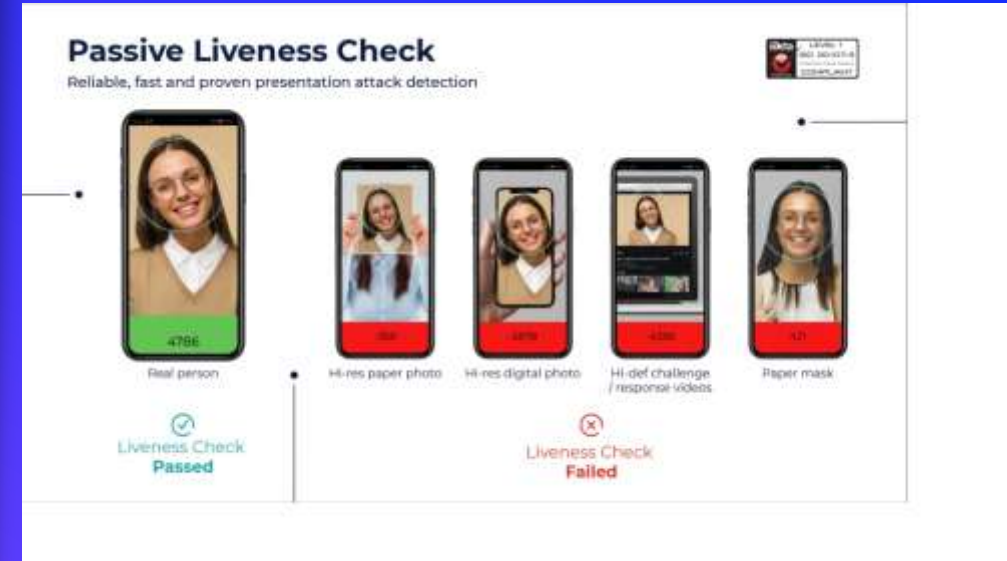
- Banks and FinTech
- Software developers and Tech
- Government agencies

How did we create those datasets?

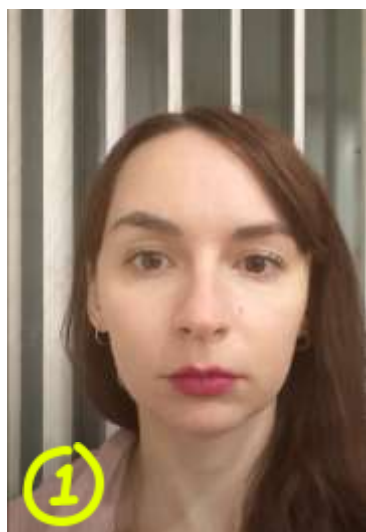
We collected data according to iBeta lab and ISO standards. Our tech partner successfully passed both iBeta levels

Recent success story

The Asian fintech company certified at Level 1 in November using our data and is now progressing to Level 2



Types of attacks in the dataset for iBeta level 1



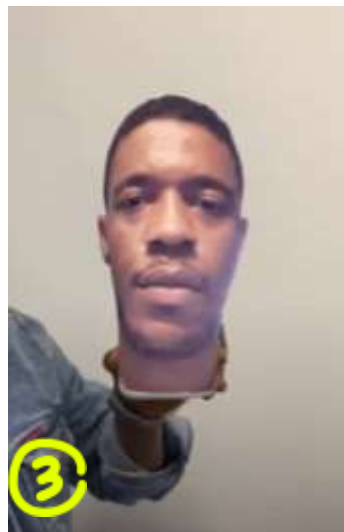
Real person (w/o attack)

~7 100 videos



2D Mask
Printed photos cut out along the contour

~3 000 videos



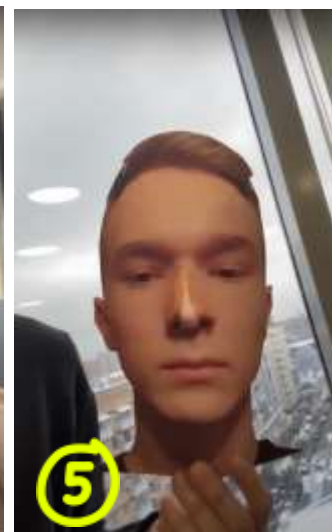
Wrapped 2D Mask
Printed photos attached to a cylinder

~3 100 videos



2D Mask with eyeholes, 8 variations (hands, glasses)

~9 300 videos



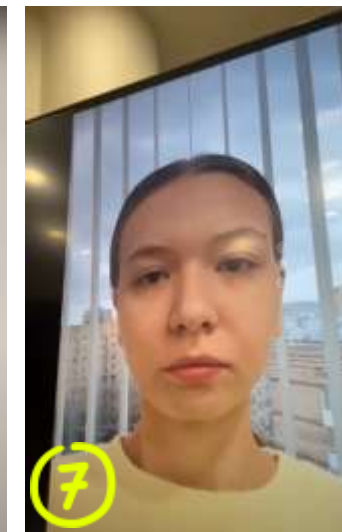
3D Masks (E.g., 3D nose on printed cutout)

~2 100 videos



Replay attack, Smartphone

~1 690 videos



Replay attack, PC/ Laptop/ tablet

~2 390 videos

Each attack has: 6 videos on 10 different backgrounds, at least 1920 x 1080 resolution, all videos in full-face (slight head rotation is allowed), 25 men and 25 women, among them 12 men and 2 women are dark-skinned

TOTAL: ~28,8k videos and 50 people